

## RUBBER SUPPORT INSERT

A practical and effective way to prevent crushing of insulation at pipe support locations of Chilled water, Condenser water, and domestic hot/cold water installations.



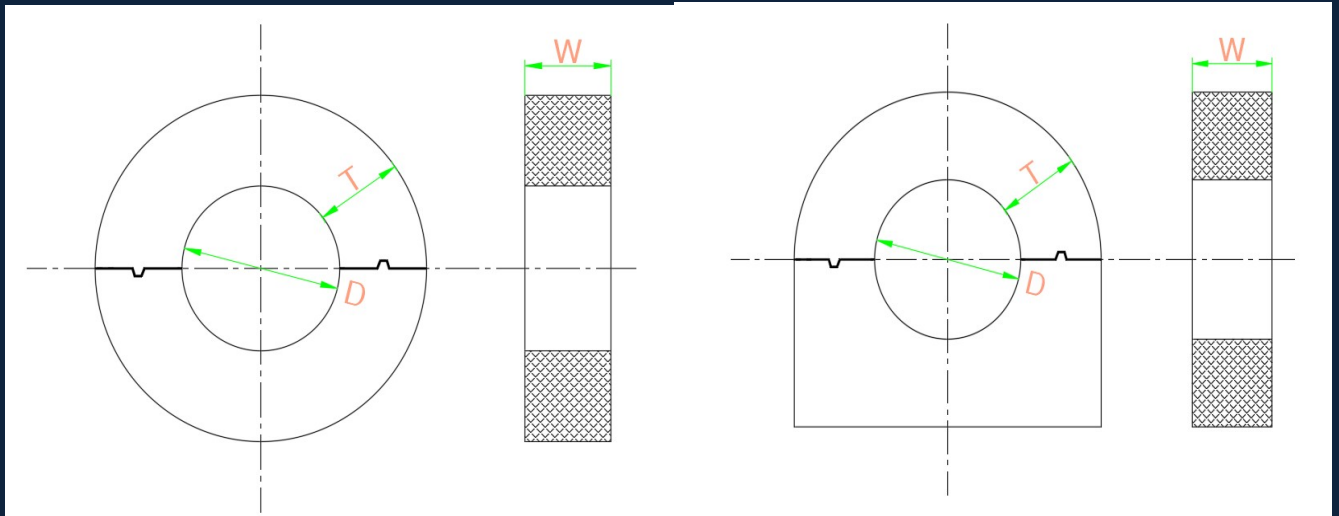
### Features & Benefits

- Used at the supporting points of insulated pipes to prevent crushing of insulation.
- Inherently superior to wood. Very high load bearing capacity Dimensional accuracy, since each piece is machine molded.
- Excellent resistance to deterioration/distortion.
- Density max : 1200 kg/m<sup>3</sup>
- Thermal conductivity: 0.16 w/m
- Temperature resistance from -20°C to +100°
- RSI is Eco - friendly product. Eliminates the need for felling trees just to make pipe support rings
- D Type also available

### Standard Width

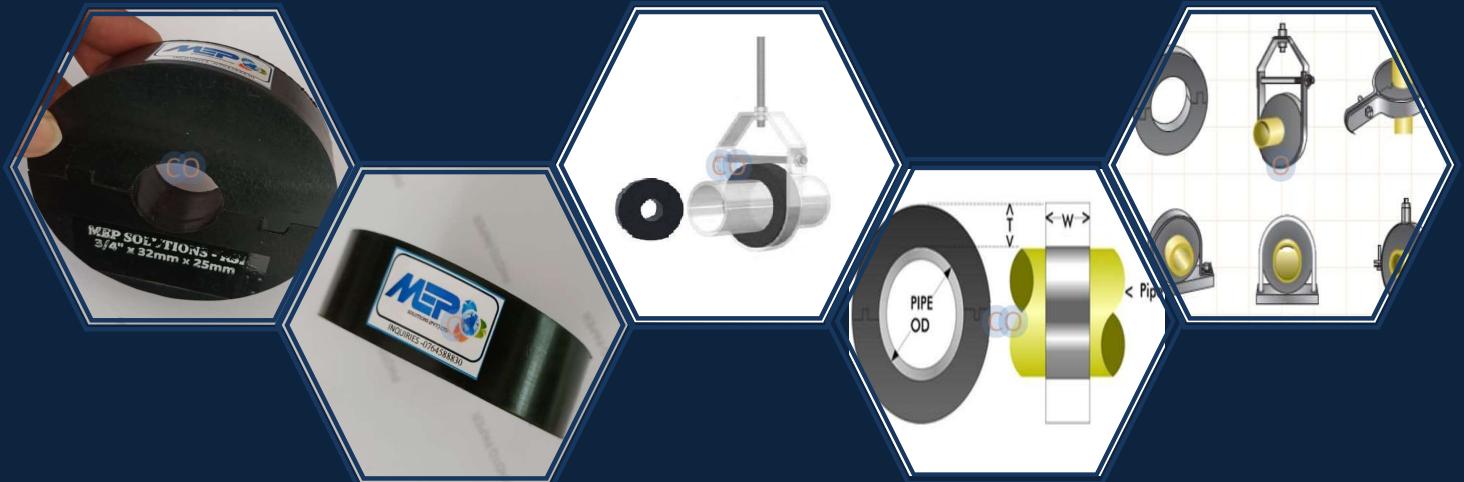
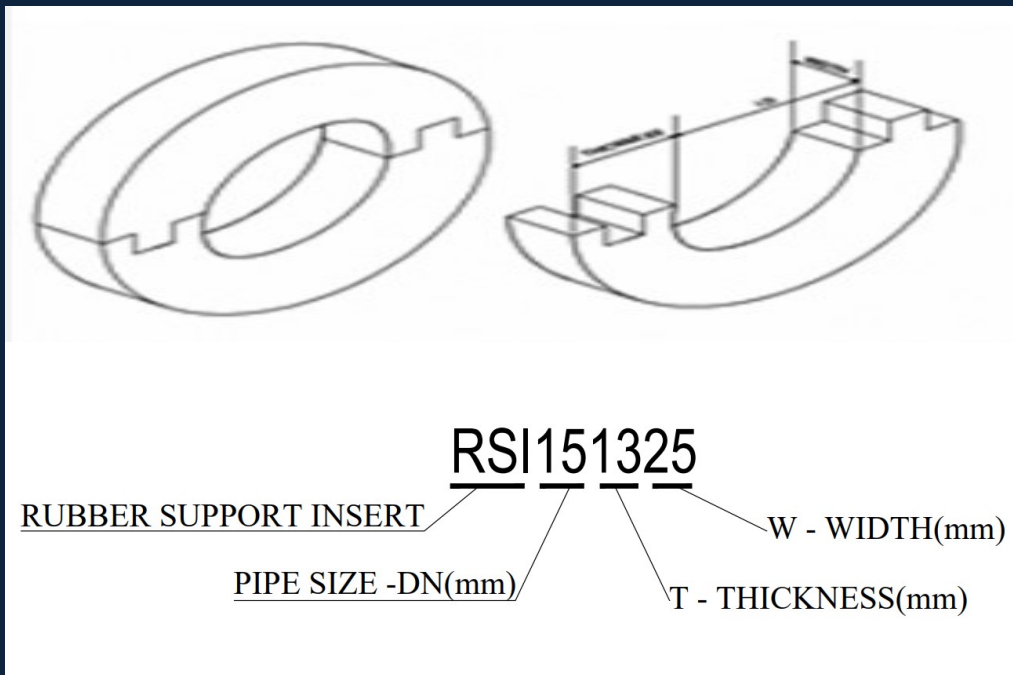
- 1 1/2" to 2" : 25mm
- 2 1/2" to 5" : 38mm
- 6" and above : 50mm
- Customized widths also available

# RUBBER SUPPORT INSERT FOR PVC PIPES



Round - Type

D - type



## TABLE OF RSI SIZE FOR THE SELECTION OF PVC PIPES

PVC PIPE SIZE		RSI SIZE		T - THIKNESS (mm)							
INCH	DN (mm)	D (mm)	W (mm)	13	19	25	32	38	50	65	75
1/2"	20	20	25	RSI201325	RSI201925	RSI202525	RSI203225	RSI203825	RSI205025	RSI206525	RSI207525
3/4"	25	25	25	RSI251325	RSI251925	RSI252525	RSI253225	RSI253825	RSI255025	RSI256525	RSI257525
1"	32	32	25	RSI321325	RSI321925	RSI322525	RSI323225	RSI323825	RSI325025	RSI326525	RSI327525
1 1/4"	40	40	25	RSI401325	RSI401925	RSI402525	RSI403225	RSI403825	RSI405025	RSI406525	RSI407525
1 1/2"	50	50	25	RSI501325	RSI501925	RSI502525	RSI503225	RSI503825	RSI505025	RSI506525	RSI507525
2"	63	63	25	RSI631325	RSI631925	RSI632525	RSI633225	RSI633825	RSI635025	RSI636525	RSI637525
2 1/2"	75	75	38	RSI751338	RSI751938	RSI752538	RSI753238	RSI753838	RSI755038	RSI756538	RSI757538
3"	90	90	38	RSI901338	RSI901938	RSI902538	RSI903238	RSI903838	RSI905038	RSI906538	RSI907538
4"	110	110	38	RSI1101338	RSI1101938	RSI1102538	RSI1103238	RSI1103838	RSI1105038	RSI1106538	RSI1107538
5"	140	140	38	RSI1401338	RSI1401938	RSI1402538	RSI1403238	RSI1403838	RSI1405038	RSI1406538	RSI1407538
6"	160	160	50	RSI1601350	RSI1601950	RSI1602550	RSI1603250	RSI1603850	RSI1605050	RSI1606550	RSI1607550
8"	225	225	50	RSI2251350	RSI2251950	RSI2252550	RSI2253250	RSI2253850	RSI2255050	RSI2256550	RSI2257550
10"	280	280	50	RSI2801350	RSI2801950	RSI2802550	RSI2803250	RSI2803850	RSI2805050	RSI2806550	RSI2807550
12"	315	315	50	RSI3151350	RSI3151950	RSI3152550	RSI3153250	RSI3153850	RSI3155050	RSI3156550	RSI3157550

## TABLE OF RSI OUTER DIAMETER FOR THE HANGING MATERIAL SELECTION

PVC PIPE SIZE		RSI SIZE		RSI OUTER DIAMETER WITH INSULATION THIKNESS(mm)							
INCH	DN (mm)	D (mm)	W (mm)	13 THK	19 THK	25 THK	32 THK	38 THK	50 THK	65 THK	75 THK
1/2"	20	20	25	46	58	70	84	96	120	150	170
3/4"	25	25	25	51	63	75	89	101	125	155	175
1"	32	32	25	58	70	82	96	108	132	162	182
1 1/4"	40	40	25	66	78	90	104	116	140	170	190
1 1/2"	50	50	25	76	88	100	114	126	150	180	200
2"	63	63	25	89	101	113	127	139	163	193	213
2 1/2"	75	75	38	101	113	125	139	151	175	205	225
3"	90	90	38	116	128	140	154	166	190	220	240
4"	110	110	38	136	148	160	174	186	210	240	260
5"	140	140	38	166	178	190	204	216	240	270	290
6"	160	160	50	186	198	210	224	236	260	290	310
8"	225	225	50	251	263	275	289	301	325	355	375
10"	280	280	50	306	318	330	344	356	380	410	430
12"	315	315	50	341	353	365	379	391	415	445	465



# MATERIAL SUPPLIED BY MEP SOLUTIONS

- ✓ NBR INSULATIONS (GULF -O -FLEX)
- ✓ RUBBER SUPPORT INSERT (RSI)
- ✓ VFD (YASKAWA)
- ✓ DUCT SHEET / ACCESSORIES
- ✓ MOTORIZED VCD
- ✓ DUCT FABRICATION
- ✓ VOLUME CONTROL DAMPER
- ✓ HANGING MATERIALS
- ✓ GI NUT & BOLT
- ✓ LP/ CO2/ RH SENSORS



19/N/5, Bandarawatte, Eldeniya, Kadawatha

E- Mail: [info@mepsolutions.lk](mailto:info@mepsolutions.lk)

Website: [www.mepsolutions.lk](http://www.mepsolutions.lk)

Tel: 0764588830/ 076-2468326 / 077-2326254